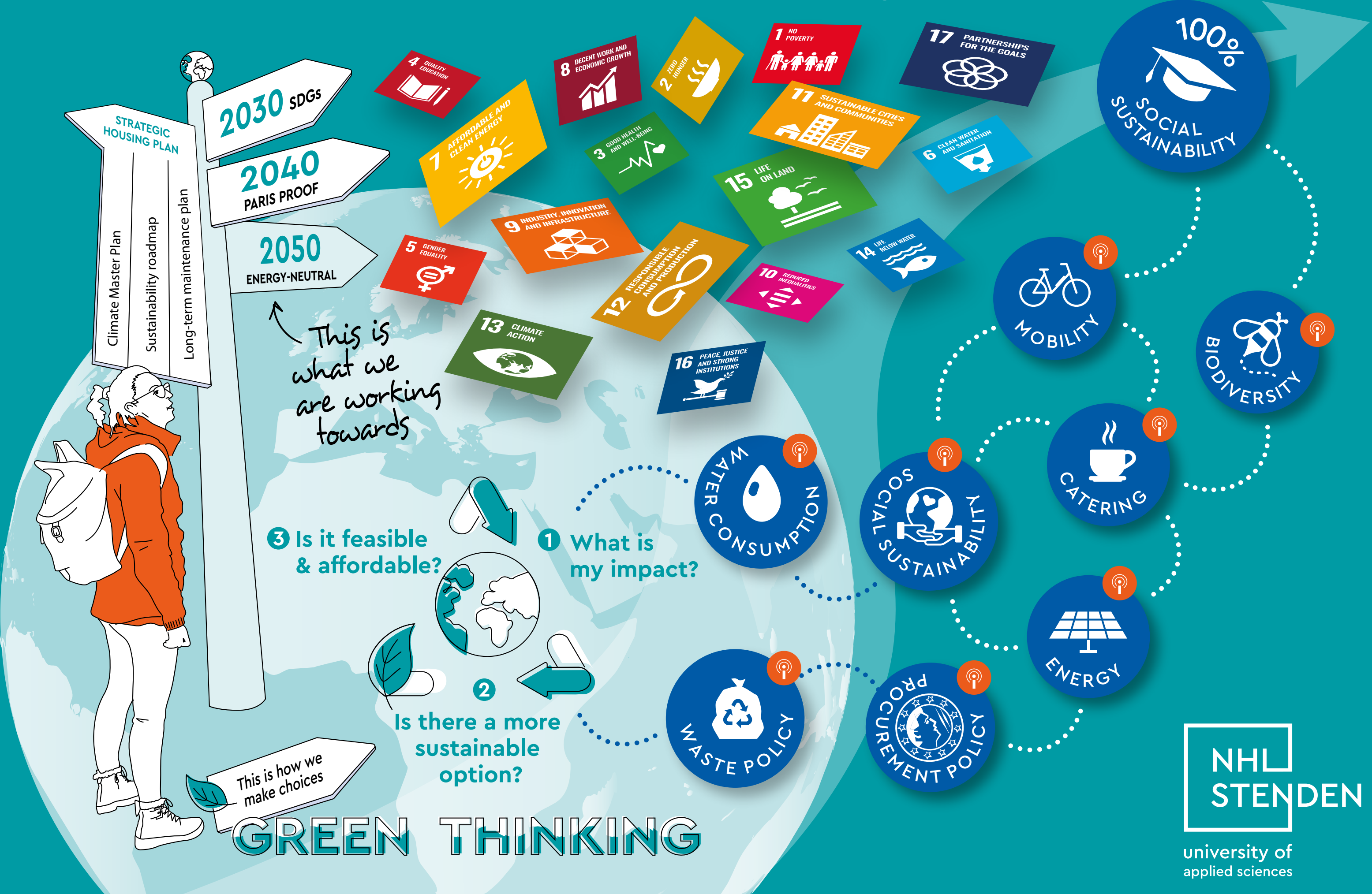


# This is how we do business sustainably



# WASTE POLICY

At NHL Stenden:

- we **prevent food waste**. Students from NHL Stenden's Maritime Institute Willem Barentsz (MIWB) on Terschelling live on campus for the first two years. Every day, they consciously register for meals in advance via a handy app and rate those.
- we have scrutinised the number and locations of the **wastebaskets** and made the most logical distribution of these. This keeps the number of bins to a minimum, so that waste bags really get full and are used optimally.
- we have eight central recognisable **Dopper water taps**. A digital screen gives students and staff instant insight into their own positive impact. NHL Stenden sees in a dashboard how much plastic has been saved.
- we **separate the paper waste from residual waste**. Students and staff can also dispose of their plastic bottles via special collection **bins for plastic bottles**.
- we motivates students and staff to bring **reusable mugs** or use the cardboard cup made of cane sugar more often, through promotion on the screens of the coffee machines and discount offers at the coffee corners. The Meppel location no longer issues cardboard cups.
- a **BioTransformer** is deployed at the Wannee restaurant. Kitchen and restaurant waste is no longer disposed of, but converted into biogas for cooking by its own fermenter. The by-product, vital biowater, is used for in-house greenery.
- **reuse of materials** is standard. For instance, if furniture is no longer usable within a certain study programme, consideration is given to whether it can be used elsewhere within the university. If not, it will go to a partner who will give substance to circular working environments in a more social and responsible way.
- we manage waste according to **Lansink's Ladder**. The university of applied sciences thus monitors the composition and quantity of waste with the aim of reducing it and putting it to good (re)use.
- we are the **customer case of a frontrunner group** Facilitair that is working on waste reduction and prevention. The university of applied sciences is working on the concrete results.
- we have a 3D printer where students and staff can have products printed from **circular plastics**.



# This is how we do business sustainably

## PROCUREMENT POLICY

At NHL Stenden:

- in all tenders, **the Sustainable Development Goals and climate objectives** guide the programme of requirements. NHL Stenden makes the conscious choice to only work with partners who also feel strongly about these goals. Some examples are the cleaning partner that is committed to reducing its CO2 footprint, the design studio that opts directly for sustainable materials in its designs, the sanitary partner that rents out organic cotton towels and the office furniture supplier that focuses solely on circularity.
- we apply **Rapid Circular Contracting**. This is a way of innovation-oriented circular procurement that challenges the market on the basis of high-level ambitions.

CLOSE

GREEN THINKING



## ENERGY

At NHL Stenden:

- we have chosen the **most sustainable form of lighting, LED**. The installation company is replacing all fluorescent lighting in collaboration with students from Friesland College.
- we now have at all locations **smart heat pumps and solar panels** for sustainable power generation and efficient heating.
- we have **PCM cooling systems**, the most sustainable and energy-efficient solution for cooling server rooms, amongst other things. The system is capable of storing large amounts of heat or cold and releasing it only when the ambient temperature demands it.
- the **mixer taps are set to cold** by default. Students and staff have to perform an action, adding heat in a conscious way. As a result, the water is never heated up unnecessarily.
- we carry out maintenance according to a **multi-year maintenance plan** that takes energy-saving measures into account.
- we monitor the use of rooms via the app Officebooking. Using this data, the university of applied sciences makes adjustments to allocated teaching, research and work spaces. The result is the **most efficient use of space and energy**.
- we follow the advice of an **external expert** who guarantees that the installation systems at all locations will become even more sustainable.
- we have via a **Fastlane dashboard**, up-to-date insight per location on the route of being Paris Proof by 2040 and 100% energy-neutral by 2050.
- the Notiz Hotel belonging to the college has achieved the **Golden Green Key quality award** for years in a row for all sustainable measures with respect and concern for the environment. This is the highest level achievable.



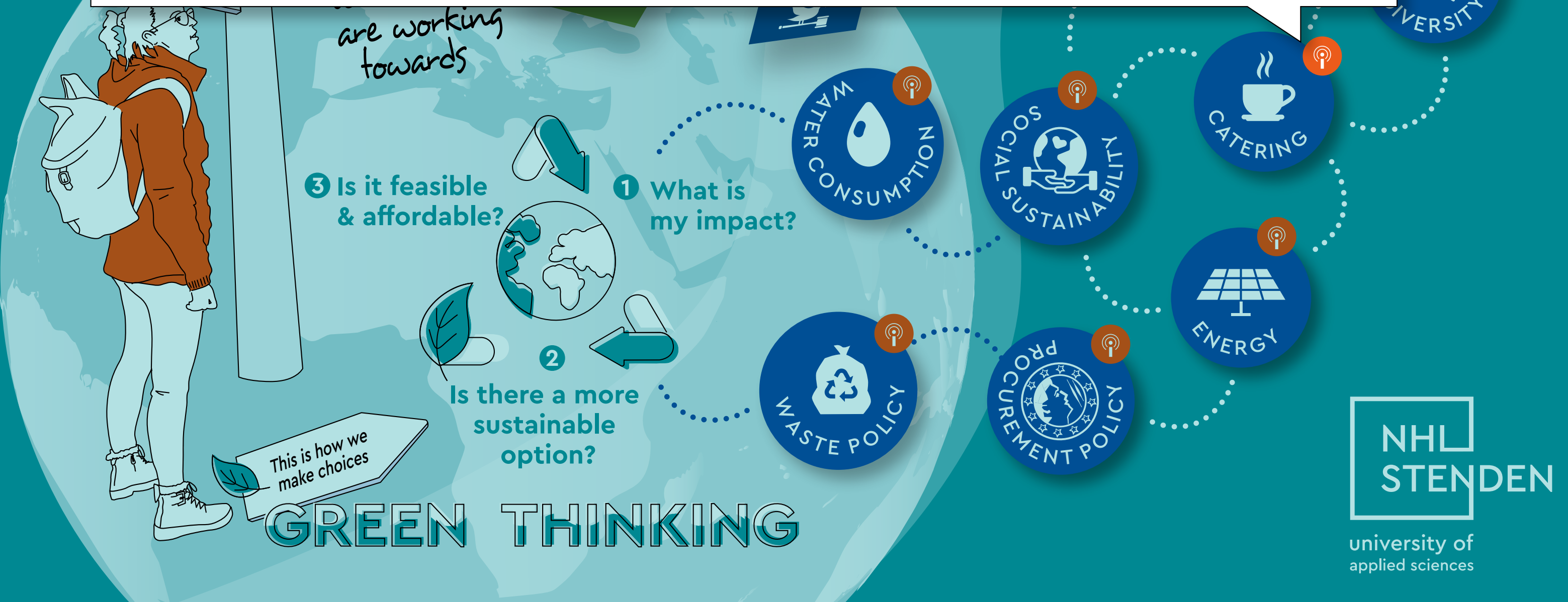
# This is how we do business sustainably

CLOSE

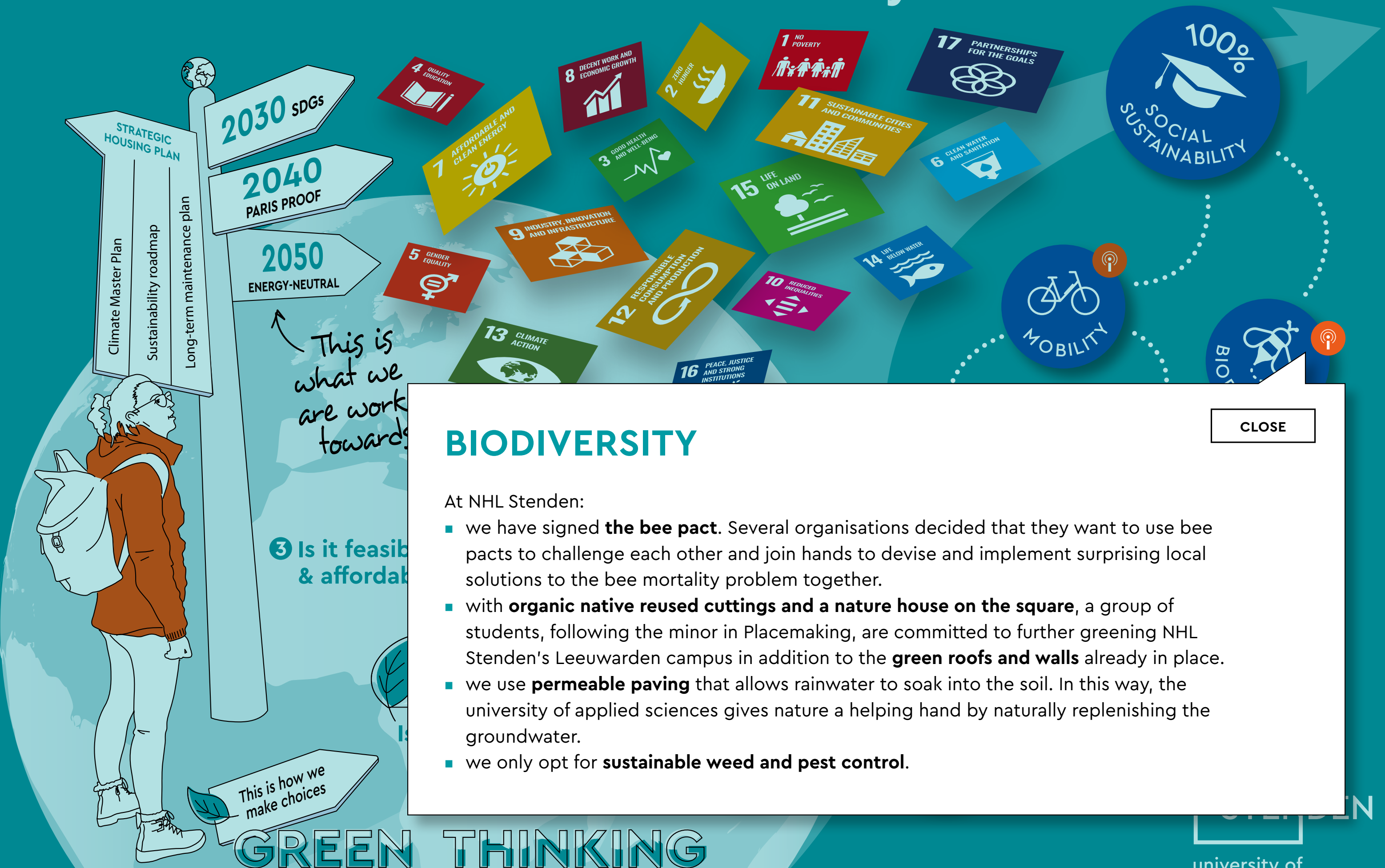
## CATERING

At NHL Stenden:

- we apply the **Dutch Cuisine** principle in all canteens. This consists of five components: Culture, Health, Nature, Quality and Value. The dishes consist of 80% seasonal vegetables and 20% meat and fish.
- we **prevent food waste**. Students from NHL Stenden's Maritime Institute Willem Barentsz (MIWB) on Terschelling live on campus for the first two years. Every day, they consciously register for meals in advance via a handy app and rate those.
- all hot drinks are produced and traded under **fair trade** conditions.
- we have eight central **recognisable Dopper water taps**. A digital screen gives students and staff instant insight into their own positive impact. NHL Stenden can see in a dashboard how much plastic has been saved.



# This is how we do business sustainably



## BIODIVERSITY

At NHL Stenden:

- we have signed **the bee pact**. Several organisations decided that they want to use bee pacts to challenge each other and join hands to devise and implement surprising local solutions to the bee mortality problem together.
- with **organic native reused cuttings and a nature house on the square**, a group of students, following the minor in Placemaking, are committed to further greening NHL Stenden's Leeuwarden campus in addition to the **green roofs and walls** already in place.
- we use **permeable paving** that allows rainwater to soak into the soil. In this way, the university of applied sciences gives nature a helping hand by naturally replenishing the groundwater.
- we only opt for **sustainable weed and pest control**.

CLOSE



# This is how we do business sustainably

## WATER CONSUMPTION

CLOSE

At NHL Stenden:

- we use **biodegradable tableware** in our canteens, reducing our water consumption for dishwashing.
- our **dishwashers** are adjusted in a specific way to save water.
- the cleaning partner applies **water-saving cleaning methods**. This means, among other things, that rinsing is less necessary by using environmentally friendly cleaning agents.
- when renovating the toilet groups, we opted for **water-saving urinals and taps**. The taps are also self-stopping, so a tap never runs unnecessarily.
- the Notiz Hotel belonging to the college has achieved the **Golden Green Key quality award** for years in a row for all sustainable measures with respect and care for the environment. This is the highest level achievable.



# SOCIAL SUSTAINABILITY

CLOSE

At NHL Stenden:

- there is the Idare platform through which the university of applied sciences aims to promote diversity. Through the platform, NHL Stenden has established a **vision and ambition in the field of diversity, equity and inclusion**.
- from 1 June 2022, lockers with **free menstrual products** will be hanging on the most frequently used toilet rooms within more NHL Stenden locations. After all, good access to these products is a precondition for optimal functioning and thus studying.
- we have several **gender-neutral toilets**. The university of applied sciences wants everyone to be able to be themselves and feel safe.
- **participation staff** are employed, including in catering and facility services. NHL Stenden wants all people to feel welcome and given fair opportunities.
- we work proactively to optimise **accessibility for the disabled**. Service staff take special training courses for this purpose.
- we regularly **seek links with other knowledge institutions**. For example, the installation company replaced all lighting in cooperation with students from Friesland College.
- students work on **real-life issues in cooperation with the practical world** throughout their studies, in accordance with the DBE teaching concept.
- we have a special network, Campus Connect, which promotes **vibrancy on campus and stimulates connection & development**. The aim is a vibrant campus where students meet SMEs, the municipality and local residents and where connections and crossovers occur. The aim is a vibrant campus where students meet SMEs, the municipality and local residents and where connection and crossovers are created.
- in the Inclusive Community Lab, students from NHL Stenden work together with residents, businesses and organisations on **sustainable solutions to eradicate poverty**.



is there a more  
sustainable  
option?

## GREEN THINKING



# This is how we do business sustainably



## MOBILITY

CLOSE

At NHL Stenden:

- we facilitate **working from home** well. Every employee can claim a specific amount for the furnishing of an ergonomic home office. NHL Stenden also has a good regional presence with several locations, ensuring that employees always have a workplace close to home.
- we encourage **cycling** by providing a secure bicycle shed with repair service and an attractive bicycle scheme. Every employee can purchase a bicycle for a specific amount every four years and have it deducted so the employee benefits from a tax advantage.
- we encourage **electric driving**. Lease cars for employees are electric by default, unless.... There are also sufficient charging stations in the car parks of almost all locations.
- business trips are made **preferably by public transport**. NHL Stenden motivates its employees to do so with free Business Cards. For international business trips staff members travel by train for distances of up to six hours as standard; the option of flying is only considered for longer distances. For business trips abroad, the travel agency periodically charts the travel kilometres per mode of transport for awareness, policy adjustments and compensation of CO<sub>2</sub> emissions.

GREEN THINKING

NHL  
STENDEN

university of  
applied sciences